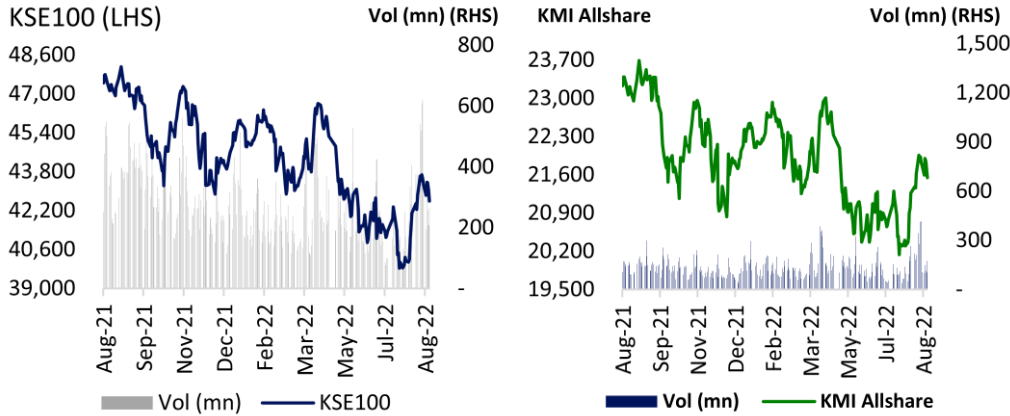


August 26th, 2022



Source: PSX

PSX: Market Stats

Market Cap (PKR'bn)	7,111
Market Cap (USD'bn)	32.25
Period Change	-1.3%
Avg Daily Volume (mn)	249.9
Avg Daily Value (PKR'mn)	8,111
Avg Daily Val (USD'mn)	36.78

KSE - 100 Index

Open (19 Aug'22)	43,271
Close (26 Aug'22)	42,592
Absolute Change	(679.1)
Change (%)	(1.6)

KMI All Share

Open (19 Aug'22)	21,769
Close (26 Aug'22)	21,547
Absolute Change	(222.8)
Change (%)	(1.0)
Avg Volume (mn)	249.9
Avg Value (PKR'mn)	8,110

KSE - 30 Index

Open (19 Aug'22)	16,399
Close (26 Aug'22)	16,115
Absolute Change	(283.6)
Change (%)	(1.7)
Avg Volume (mn)	60.1
Avg Value (PKR'mn)	5,074

Economic Indicators

3-month KIBOR (%)	15.92
6-month KIBOR (%)	16.00
12-month KIBOR (%)	16.33
10-year PIB (%)	12.60
Forex Reserve (USD'bn)	13.52
Inflation CPI - Jul'22 (%)	24.93
Exchange Rate (PKR/USD)	220.50

Source: PSX, SBP

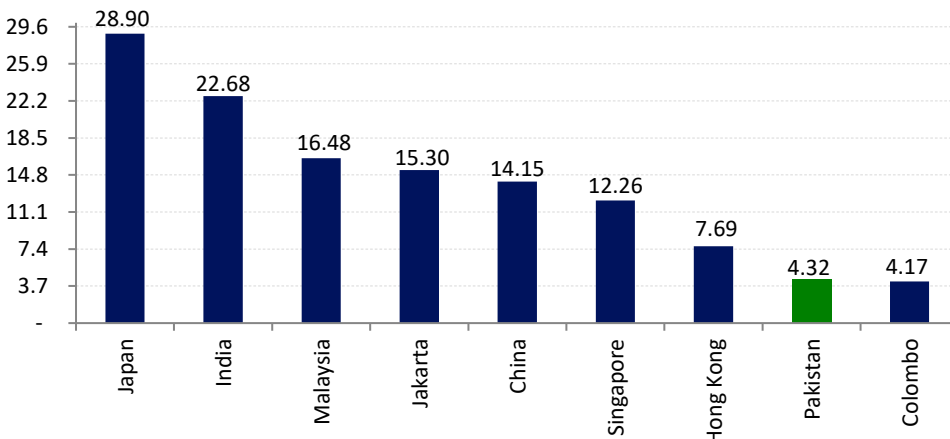
Kishan Sidi

kishan.sidi@fortunesecurities.com

Phone – 021-35309112

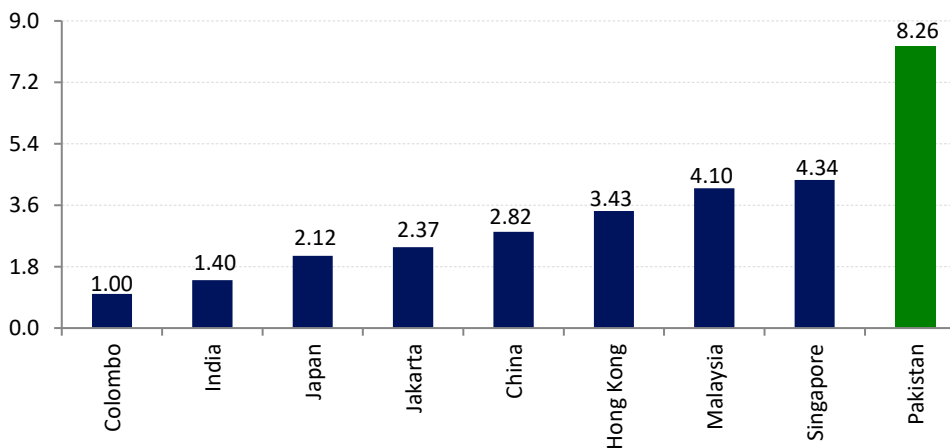
VALUATION PERSPECTIVE

PER Comparison (x)



Source: Bloomberg

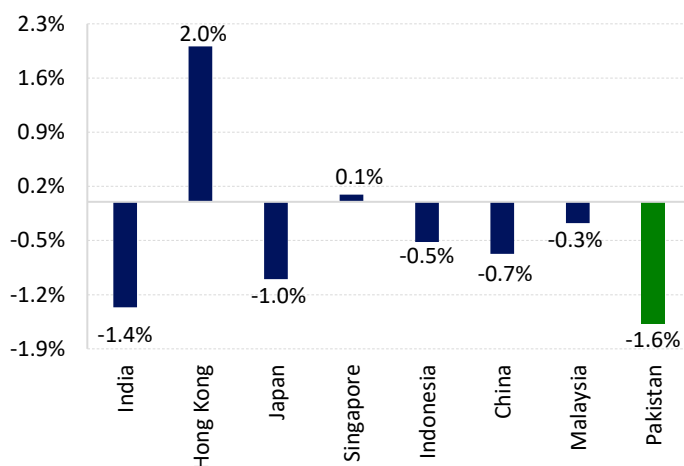
Dividend Yield Comparison (%)



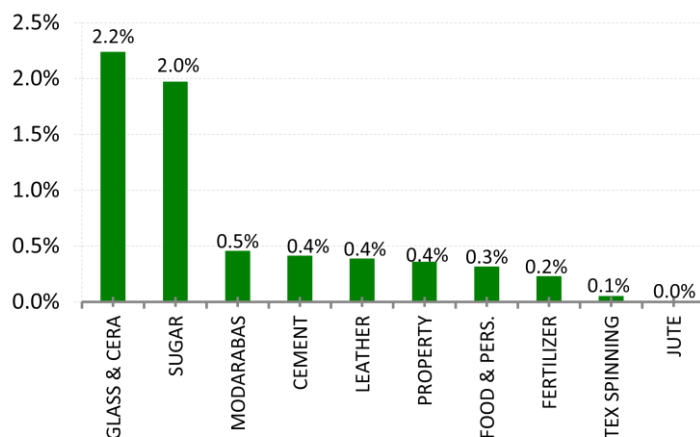
Source: Bloomberg

PERFORMANCE DURING THE WEEK

WoW Market Performance



WoW Sector Performance



Source: PSX

Source: PSX

Top 10 Gainers of the week (KSE100)

Company	Change
Fatima Fertilizer Co	5.8%
Lucky Cement Limited	5.2%
Standard Chartered Bank	4.7%
Feroze1888 Mills	3.7%
Systems Limited	2.3%
K-Electric Limited	1.7%
Nestle Pakistan Limited	1.7%
Indus Motor Company	1.6%
Shell Pakistan Limited	1.5%
Pakistan Oilfields Limited	1.4%

Source: Bloomberg, Fortune Research

Top 10 Losers of the week (KSE100)

Company	Change
Kohinoor Textile Mills	-9.9%
Pakistan State Oil	-8.2%
Jahangir Siddiqui & Co.	-7.6%
Adamjee Insurance Co	-6.9%
Engro Polymer & Chem.	-6.7%
The Hub Power	-6.3%
Frieslandcampina Engro	-6.1%
National Bank of Pak	-5.9%
Byco Petroleum Pak	-5.8%
Pakistan Stock Exchange	-5.7%

KMI All Share - Top 10 Gainer

Company	Change
B.R.R. Guardian Modaraba	18.0%
Reliance Cotton Spinning	15.4%
Bunnys Limited	14.3%
Pakistan Aluminium Beverage	13.2%
Adam Sugar Mills Limited	12.4%
Tariq Glass Industries Limited	11.0%
Bannu Woollen Mills Limited	9.8%
KASB Modaraba	9.3%
Sapphire Textile Mills Limited	8.4%
First Prudential Modaraba	8.2%

Source: PSX, Fortune Research

KMI All Share - Top 10 Loser

Company	Change
Al-Noor Sugar Mills	-13.5%
Dadex Eternit Limited	-12.1%
Popular Islamic Modaraba	-11.4%
Pakistan Services Limited	-11.0%
S.S.Oil Mills Limited	-10.3%
Saritow Spinning Mills	-9.1%
Gatron (Industries) Limited	-9.1%
Service Industries Textiles	-8.4%
Meezan Bank Limited	-8.3%
Worldcall Telecom Limited	-8.2%

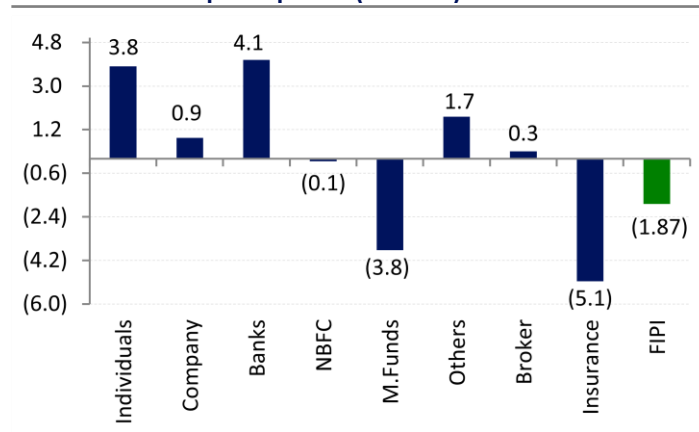
FLOWS

WoW Sector wise Participation (USD'mn)

Sector	Bank /DFI	Individual	M.Funds	FIPI
Cement	0.03	(0.09)	0.15	0.13
Oil & Gas	0.07	0.34	(0.03)	(0.11)
Banks	(0.80)	0.20	0.15	(3.65)
Power	(0.16)	0.07	0.02	0.49
Food & Pers.	(0.02)	(0.09)	(0.01)	0.03
Textile	0.09	(0.13)	0.04	(0.02)
Fertilizer	0.11	0.10	(0.26)	(0.03)
Other Org	0.13	(0.11)	(0.03)	0.26
Technology	0.30	(0.20)	0.10	0.18

Source: NCCPL, Fortune Research

WoW Client wise participation (USD'mn)



Source: NCCPL, Fortune Research

KEY NDM'S

Member to Member

Company	Volume (mn)	Price	Value (PKR'mn)	Buyer	Seller
NBP	1.63	31.6	51.6	Brokers	Brokers
TRG	0.35	103.9	36.4	Brokers	Brokers
ICI	0.05	715.0	35.8	Individuals	Individuals
NONS	0.36	92.00	32.7	Overseas Pak	Companies
SBL	1.43	8.0	11.4	Individuals	Individuals

Client to Client

Company	Volume (mn)	Price	Value (PKR'mn)	Buyer	Seller
NBP	3.75	29.5	110.6	Companies	Companies
AKBL	5.70	19.3	109.7	Brokers	Brokers
ICI	0.15	715.0	107.3	Individuals	Individuals
AKBL	3.20	19.3	61.6	Companies	Individuals
FLYNG	6.73	8.0	53.8	Comp / Indi.	Comp / Indi.

Source: PSX, Fortune Research

Future Contract Open Interest

Symbol	Shares (mn)	Value (PKR'mn)
TRG-AUG	10.9	1,054.8
UNITY-AUG	28.5	629.8
PSO-AUG	2.3	421.4
PRL-AUG	14.3	270.0
LUCK-AUG	0.5	257.4
TPLP-AUG	12.1	240.8
NRL-AUG	0.9	234.7
ATRL-AUG	1.4	231.2
NCL-AUG	4.4	174.4
OGDC-AUG	1.9	161.2
Total	260.1	6,778.4

Source: PSX

Margin Trading System (MTS)

Symbol	Shares (mn)	Value (PKR'mn)
LUCK	0.6	232.4
UNITY	12.6	215.7
OGDC	5.5	384.1
CNERGY	42.4	194.6
HBL	6.3	489.8
TRG	5.5	427.9
HUBC	1.0	53.7
NRL	0.8	176.1
BAFL	2.0	54.7
ATRL	1.2	151.3
Total	333.8	6,074.8

Source: NCCPL

Chief Executive

Anis ur Rahman, CFA anis.rahman@fortunesecurities.com (+92 21) 35309111

Director Broking

Syed Arif ur Rehman syed.arif.rehman@fortunesecurities.com (+92 21) 35309113

Sales

Irfan Surya irfan.surya@fortunesecurities.com (+92 21) 35309131

Taha Aslam taha.aslam@fortunesecurities.com (+92 21) 35309124

Equity Research

Arvind Anand arvind.anand@fortunesecurities.com (+92 21) 35309143

Kishan Sidi Solanki kishan.sidi@fortunesecurities.com (+92 21) 35309112

This report has been prepared by Fortune Securities Ltd. [FSL] and is provided for information purposes only. Under no circumstances, this is to be used or considered as an offer to sell or solicitation or any offer to buy. While reasonable care has been taken to ensure that the information contained in this report is not untrue or misleading at the time of its publication, FSL makes no representation as to its accuracy or completeness. From time to time, FSL and/or any of its officers or directors may, as permitted by applicable laws, have a position, or otherwise be interested in any transaction, in any securities directly or indirectly subject of this report. FSL as a firm may have business relationships, including investment banking relationships with the companies referred to in this report. This report is provided only for the information of professional advisers who are expected to make their own investment decisions without undue reliance on this report and the company accepts no responsibility whatsoever for any direct or indirect consequential loss arising from any use of this report or its contents. This report may not be reproduced, distributed or published by any recipient for any purpose.

Website: www.fortunesecurities.com

research@fortunesecurities.com