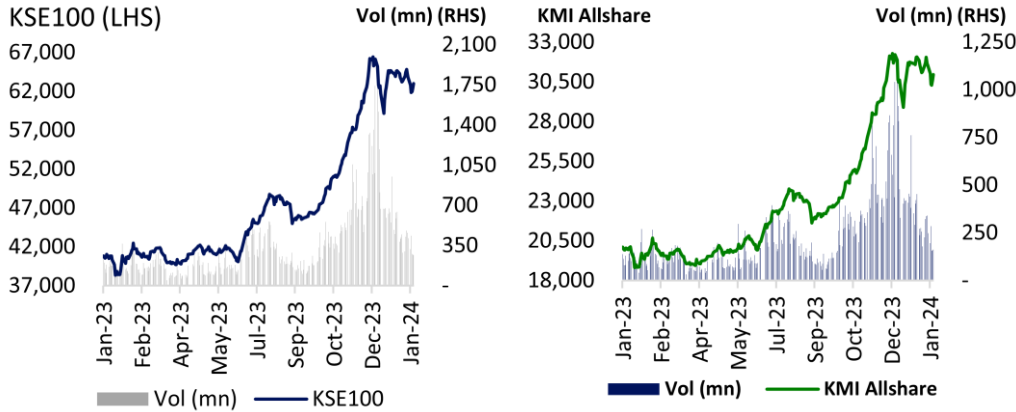


February 02nd, 2024



Source: PSX

PSX: Market Stats

Market Cap (PKR'bn)	9,206
Market Cap (USD'bn)	32.92
Period Change	-1.6%
Avg Daily Volume (mn)	312.8
Avg Daily Value (PKR'mn)	11,522
Avg Daily Val (USD'mn)	41.20

KSE - 100 Index

Open (26 Jan' 24)	63,813
Close (02 Feb' 24)	63,003
Absolute Change	(810.2)
Change (%)	(1.3)

KMI All Share

Open (26 Jan' 24)	31,537
Close (02 Feb' 24)	30,953
Absolute Change	(584.6)
Change (%)	(1.9)
Avg Volume (mn)	191.4
Avg Value (PKR'mn)	9,331

KSE - 30 Index

Open (26 Jan' 24)	21,534
Close (02 Feb' 24)	21,328
Absolute Change	(206.3)
Change (%)	(1.0)
Avg Volume (mn)	60.9
Avg Value (PKR'mn)	7,012

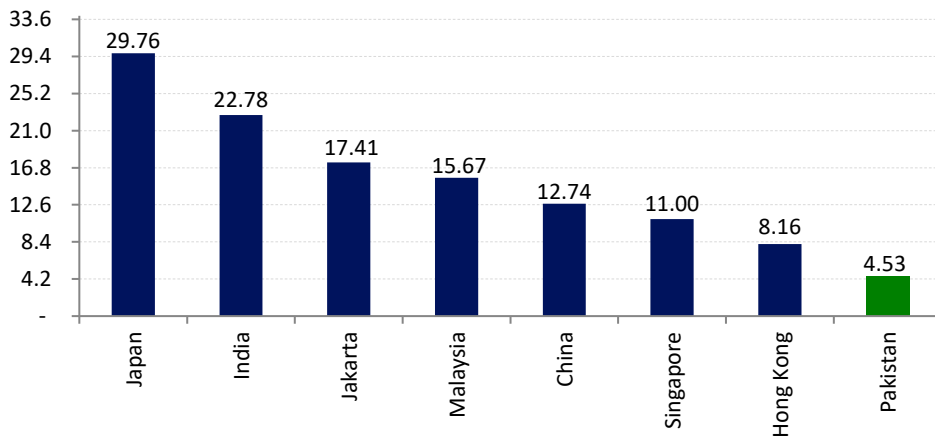
Economic Indicators

3-month KIBOR (%)	21.18
6-month KIBOR (%)	21.15
12-month KIBOR (%)	21.25
10-year PIB (%)	14.91
Forex Reserve (USD'bn)	13.26
Inflation CPI - Jan'24 (%)	28.34
Exchange Rate (PKR/USD)	279.68

Source: PSX, SBP

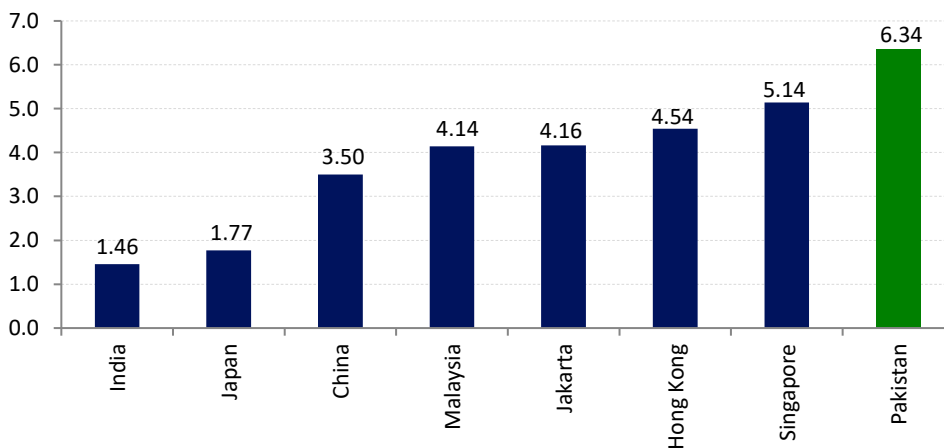
VALUATION PERSPECTIVE

PER Comparison (x)



Source: Bloomberg

Dividend Yield Comparison (%)



Source: Bloomberg

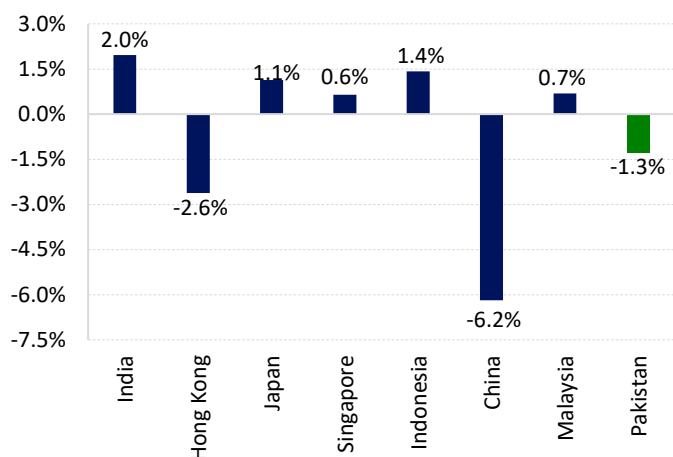
Kishan Sidi

kishan.sidi@fortunesecurities.com

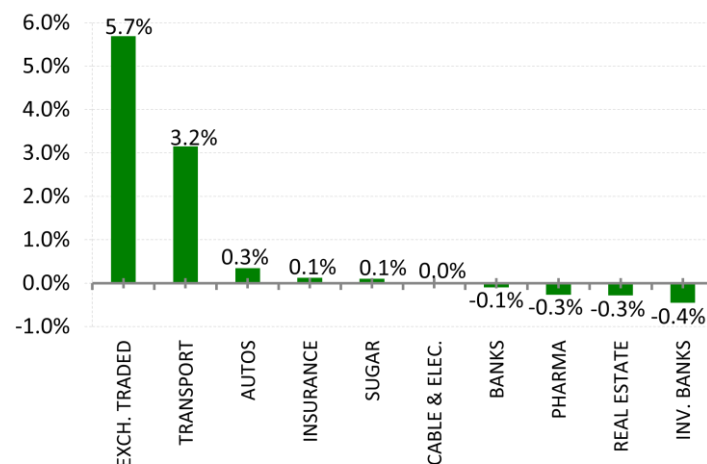
Phone – 021-35309112

PERFORMANCE DURING THE WEEK

WoW Market Performance



WoW Sector Performance



Source: PSX

Source: PSX

Top 10 Gainers of the week (KSE100)

Company	Change
Millat Tractors Limited	5.7%
Oil & Gas Dev. Co	4.4%
Unilever Pakistan Foods	4.0%
GlaxoSmithKline Pak	3.6%
MCB Bank Limited	3.5%
Askari Bank Limited	2.7%
Adamjee Insurance Co	2.6%
Pak Elektron Limited	2.5%
Bank Alfalah Limited	2.0%
Indus Motor Company	1.3%

Top 10 Losers of the week (KSE100)

Company	Change
Yousaf Weaving Mills	-12.2%
Pakistan Telecom Co	-12.1%
Colgate-Palmolive	-9.1%
K-Electric Limited	-9.1%
Mari Petroleum Com	-8.7%
Pak-Gulf Leasing Com	-8.3%
Cnergyico PK Limited	-7.2%
Frieslandcampina Engro	-6.9%
Sui Northern Gas Pipelines	-6.8%
Honda Atlas Cars	-6.4%

Source: Bloomberg, Fortune Research

KMI All Share - Top 10 Gainer

Company	Change
Tariq Corporation Ltd	13.2%
Clover Pakistan Limited	13.2%
Habib Sugar Mills Ltd	11.7%
Nimir Resins Limited	11.6%
Sindh Modaraba	10.2%
Adam Sugar Mills	9.4%
Jauharabad Sugar Mills	8.8%
AN Textile Mills Limited	7.6%
Ghani Value Glass	7.4%
Beco Steel Limited	7.0%

KMI All Share - Top 10 Loser

Company	Change
Gammon Pakistan td	-12.0%
Faran Sugar Mills	-11.1%
Sanghar Sugar Mills	-9.6%
Data Agro Limited	-9.1%
Leather Up Limited	-9.1%
Shadab Textile Mills	-8.7%
Hinopak Motors Ltd	-8.6%
First Equity Modaraba	-8.6%
Gharibwal Cement	-8.6%
First Paramount Mod	-8.3%

Source: PSX, Fortune Research

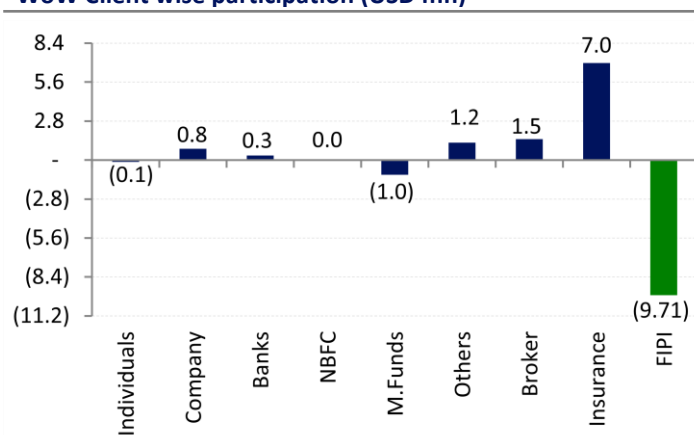
FLOWS

WoW Sector wise Participation (USD'mn)

Sector	Bank /DFI	Individual	M.Funds	FIPI
Cement	0.06	0.70	0.22	(2.21)
Oil & Gas	0.25	2.21	(1.47)	(1.80)
Banks	1.57	0.79	0.06	(2.77)
Power	(0.01)	0.64	0.31	(1.68)
Food & Pers.	0.07	0.15	(0.00)	0.09
Textile	0.14	0.12	(0.01)	0.57
Fertilizer	1.18	(0.73)	(0.22)	0.11
Other Org	0.11	(0.66)	(0.51)	(1.19)
Technology	(0.14)	0.85	0.46	(1.49)

Source: NCCPL, Fortune Research

*WoW Client wise participation (USD'mn)



Source: NCCPL, Fortune Research

KEY NDM'S

Member to Member

Company	Volume (mn)	Price	Value (PKR'mn)	Buyer	Seller
DCR	20.00	13.5	270.0	Companies	Bank/DFI
MTL	0.38	500.0	192.0	Individuals	Brokers
MEHT	0.15	400.0	60.0	Brokers	Companies
HBL	0.30	112.20	33.7	Companies	Foreign Corp
AIRLINK	0.50	58.0	29.0	Companies	Companies

Client to Client

Company	Volume (mn)	Price	Value (PKR'mn)	Buyer	Seller
UNITY	19.98	23.5	469.4	Other Org	Brokers
NBP	16.00	15.3	245.3	Brokers	Individuals
AGL	16.00	15.1	242.2	Individuals	Individuals
MEHT	5.00	28.2	140.9	Overseas Pak	Companies
BOP	15.38	6.5	100.0	Brokers	Brokers

Source: PSX, Fortune Research

Future Contract Open Interest

Symbol	Shares (mn)	Value (PKR'mn)
OGDC-FEB	19.3	2,801.2
TRG-FEB	32.8	2,311.1
PPL-FEB	18.0	2,104.2
PSO-FEB	5.6	922.5
AIRLINK-FEB	13.4	768.5
UNITY-FEB	28.3	571.8
NRL-FEB	2.0	571.4
PRL-FEB	18.3	491.4
ATRL-FEB	1.5	485.6
DGKC-FEB	5.6	401.4
Total	550.6	17,634.1

Source: PSX

Margin Trading System (MTS)

Symbol	Shares (mn)	Value (PKR'mn)
HBL	14.3	1,368.4
OGDC	10.1	1,136.1
PPL	7.8	765.9
KEL	58.0	223.6
PSO	1.6	222.4
BOP	41.6	208.2
AIRLINK	4.3	205.7
PTC	22.5	203.6
SEARL	4.9	199.0
DGKC	3.2	194.6
Total	358.1	8,785.7

Source: NCCPL

Chief Executive

Anis ur Rahman, CFA

anis.rahman@fortunesecurities.com

(+92 21) 35309111

Sales

Taha Aslam

taha.aslam@fortunesecurities.com

(+92 21) 35309124

Irfan Surya

irfan.surya@fortunesecurities.com

(+92 21) 35309131

Equity Research

Kishan Sidi Solanki

kishan.sidi@fortunesecurities.com

(+ 92 21) 35309112

This report has been prepared by Fortune Securities Ltd. [FSL] and is provided for information purposes only. Under no circumstances, this is to be used or considered as an offer to sell or solicitation or any offer to buy. While reasonable care has been taken to ensure that the information contained in this report is not untrue or misleading at the time of its publication, FSL makes no representation as to its accuracy or completeness. From time to time, FSL and/or any of its officers or directors may, as permitted by applicable laws, have a position, or otherwise be interested in any transaction, in any securities directly or indirectly subject of this report. FSL as a firm may have business relationships, including investment banking relationships with the companies referred to in this report. This report is provided only for the information of professional advisers who are expected to make their own investment decisions without undue reliance on this report and the company accepts no responsibility whatsoever for any direct or indirect consequential loss arising from any use of this report or its contents. This report may not be reproduced, distributed or published by any recipient for any purpose.

Website: www.fortunesecurities.com

research@fortunesecurities.com